

INSTRUCTION MANUAL NITROGEN DIOXIDE DETECTOR TUBE

No.117SA

- ★ READ CAREFULLY THIS INSTRUCTION MANUAL AND THE INSTRUCTIONS OF THE ASPIRATING PUMP PRIOR TO USING THIS PRODUCT.
- ★ DO NOT DISCARD THIS INSTRUCTION MANUAL UNTIL ALL THE TUBES IN THIS BOX ARE USED UP.

1. PERFORMANCE:

Measuring Range	: 20 - 1000 ppm
and Sampling Time	: 2 minutes
Number of Pump stroke	: 1 (100mL)
Colour Change	: White → Yellowish orange
Detectable Limit	: 5 ppm
Operating temperature	: 0 - 40 °C (32-104°F) (Temperature correction is necessary.)
Aspirating Pump	: Model AP-20, AP-20S, 400B, AP-1, AP-1S or 400A

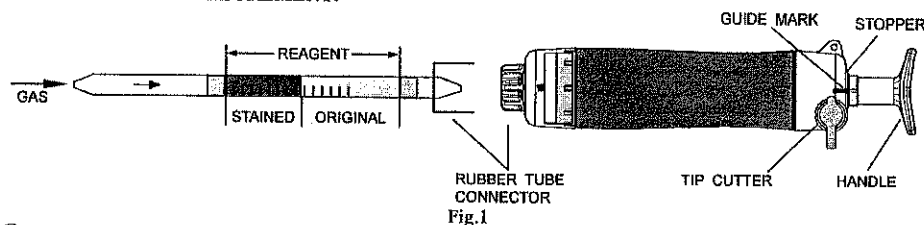
CAUTION

1. DETECTOR TUBE CONTAINS REAGENTS.
2. DO NOT TOUCH THESE REAGENTS DIRECTLY ONCE TUBES ARE BROKEN.
3. KEEP THE TUBES OUT OF THE REACH OF CHILDREN.

NOTICE

1. USE ONLY PUMP MODELS AP-20, AP-20S, 400B, AP-1, AP-1S OR 400A. OTHERWISE, CONSIDERABLE ERROR IN INDICATION MAY OCCUR.
2. BEFORE TESTING, CHECK THE ASPIRATING PUMP FOR LEAKS (REFER TO ITEM 8. INSPECTION OF ASPIRATING PUMP). ANY PUMPS SHOWING SIGNS OF LEAKAGE SHOULD BE CORRECTED BEFORE USE.
3. DO NOT USE THIS TUBE BEYOND THE STATED OPERATING TEMPERATURE RANGE.
4. STORE TUBES IN A COOL AND DARK PLACE (0-25 °C/32-77°F), AND USE BEFORE EXPIRATION DATE PRINTED ON TOP OF THE BOX.
5. PRIOR TO USE, READ CAREFULLY ITEM 9. USER RESPONSIBILITY.
6. READ THE CONCENTRATION IMMEDIATELY AFTER MEASUREMENT.

2. SAMPLING AND MEASUREMENT:



- ① Break both ends of detector tube.

CAUTION SAFETY GLASSES AND GLOVES SHOULD BE WORN TO PREVENT INJURY FROM SPLINTERING GLASS.

- ② Insert the detector tube into aspirating pump securely as shown in Fig.1. (Arrow mark shall point to the pump.)
- ③ Align the guide marks on the shaft and stopper of the aspirating pump.
- ④ Pull the pump handle at full stroke until it locks and wait for 2 minutes or until the completion of sampling is confirmed with the flow indicator of the pump (See descriptions about the flow indicator in the instructions of the pump).
- ⑤ On completion of sampling, read the scale at the maximum point of the stained layer.

- SPECIAL NOTE:**
- I. The scale is calibrated at 20 °C (68°F), 50 %R.H. and 1013hPa. Readings obtained in other circumstances should be corrected (REFER TO ITEM 3. CORRECTION FOR AMBIENT CONDITIONS).
 - II. When the maximum point of the stained layer is unclear or obliquely, read the scale at the centre between the longest and shortest points.

3. CORRECTION FOR AMBIENT CONDITIONS:

- ① Temperature; Correct the tube reading by following temperature correction table.

Tube Readings (ppm)	Temperature Correction Table						
	Corrected Concentration (ppm)						
	0 °C (32°F)	5 °C (41°F)	10 °C (50°F)	15 °C (59°F)	20 °C (68°F)	30 °C (86°F)	40 °C (104°F)
1000	—	—	—	—	1000	640	540
800	—	—	—	—	800	560	480
600	—	—	—	860	600	470	420
500	—	—	1000	700	500	410	380
400	—	—	840	540	400	350	330
300	—	1000	570	390	300	280	270
200	1000	500	320	240	200	200	190
100	200	160	120	110	100	100	100
50	60	60	60	55	50	50	50
20	20	20	20	20	20	20	20

- ② Humidity; No correction is necessary.

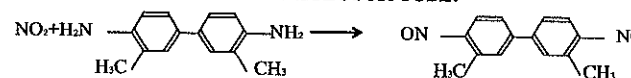
- ③ Atmospheric Pressure;

$$\text{True concentration} = \frac{\text{Temperature corrected concentration} \times 1013}{\text{Atmospheric pressure (in hPa)}}$$

4. INTERFERENCES:

Chlorine, Bromine, Iodine or Ozone produce similar stains and coexistence of more than 5ppm respectively with Nitrogen dioxide will give readings.

5. CHEMICAL REACTION IN THE DETECTOR TUBE:



6. DISPOSAL OF TUBE:

USED TUBES SHOULD BE DISPOSED CAREFULLY ACCORDING TO RELEVANT REGULATIONS, IF ANY.

7. HAZARDOUS AND DANGEROUS PROPERTIES OF NITROGEN DIOXIDE

LENGTH-OF-STAIN:

TLV-TWA. ◆ : 3 ppm

Explosive range in air : —

◆ Threshold Limit Value established by the American Conference of Governmental Industrial Hygienists, 2004.

8. INSPECTION OF ASPIRATING PUMP:

Checking for leaks;

- ① Insert sealed, unbroken detector tube into the pump.
- ② Align the guide marks on the shaft and stopper of the pump.
- ③ Pull the handle to full stroke and wait for 1 minute.
- ④ Unlock the handle and allow it to return slowly into the pump with holding the cylinder and handle securely.

CAUTION HANDLE WILL TEND TO SNAP BACK INTO THE PUMP QUICKLY.

- ⑤ If the handle returns completely to the original position, the performance is satisfactory. Otherwise, refer to maintenance procedure in the pump instructions to correct the fault.

9. USER RESPONSIBILITY:

It is the sole responsibility of the user of this equipment to ensure that the equipment is operated, maintained, and repaired in strict accordance with these instructions and the instructions provided with each Model AP-20, AP-20S, 400B, AP-1, AP-1S or 400A aspirating pump, and that detector tubes are not used which are either beyond their expiration date or have a colour change different to that stated in the Performance specifications. The Manufacturer and Manufacturer's Distributors shall not be otherwise liable for any incorrect measurement or any damages, whether damages result from negligence or otherwise.