

## 1. PERFORMANCE

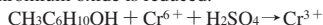
- 1) Measuring range : 5-200 ppm
- Number of pump strokes : 3 (300ml)
- 2) Sampling time : 4.5 minutes/3 pump strokes
- 3) Detectable limit : 1 ppm
- 4) Shelf life : 2 years
- 5) Operating temperature : 10 ~ 40 °C
- 6) Temperature compensation : Necessary (See "TEMPERATURE CORRECTION TABLE")
- 7) Reading : Direct reading from the scale calibrated by 3 pump strokes
- 8) Colour change : Yellow → Pale blue

## 2. RELATIVE STANDARD DEVIATION

RSD-low : 10 %    RSD-mid. : 10 %    RSD-high : 10 %

## 3. CHEMICAL REACTION

Chromium oxide is reduced.



## 4. CALIBRATION OF THE TUBE

GAS CHROMATOGRAPHY

## 5. INTERFERENCE AND CROSS SENSITIVITY

Substance	Interference	Coexistence
Aliphatic hydrocarbons (more than C <sub>3</sub> )	Whole reagent is changed to Pale brown.	The accuracy of readings is not affected.
Aromatic hydrocarbons	∕	∕
Halogenated hydrocarbons	∕	∕
Alcohols	FIG.1 Similar stain is produced.	Higher readings are given.
Esters	Pale ringed stain is produced near the bottom of the reagent.	The accuracy of readings is not affected.

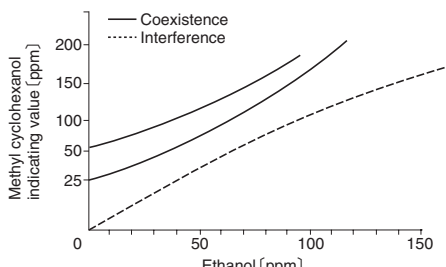


FIG.1 Influence of Ethanol

TEMPERATURE CORRECTION TABLE

Tube Readings (ppm)	Corrected Concentration (ppm)			
	10 °C (50 °F)	20 °C (68 °F)	30 °C (86 °F)	40 °C (104 °F)
200	—	200	110	65
150	—	150	85	52
100	—	100	60	40
80	170	80	50	30
60	110	60	35	25
40	70	40	25	15
20	40	20	15	10
10	20	10	7	5
5	10	5	4	3