



## 1. PERFORMANCE

- 1) Measuring range : 2-100 ppm
- Number of pump strokes : 1 (100ml)
- 2) Sampling time : 1.5 minutes/1 pump stroke
- 3) Detectable limit : 1 ppm
- 4) Shelf life : 3 years
- 5) Operating temperature : 0 ~ 40 °C
- 6) Temperature compensation : Necessary (0 ~ 10 °C) (See "TEMPERATURE CORRECTION TABLE")
- 7) Reading : Direct reading from the scale calibrated by 1 pump stroke
- 8) Colour change : White → Brown

## 2. RELATIVE STANDARD DEVIATION

RSD-low : 10 % RSD-mid. : 5 % RSD-high : 5 %

## 3. CHEMICAL REACTION

Iodine pentoxide is reduced.



## 4. CALIBRATION OF THE TUBE

GAS CHROMATOGRAPHY

## 5. INTERFERENCE AND CROSS SENSITIVITY

Substance	Interference	ppm	Coexistence
Aromatic hydrocarbons FIG.1,FIG.2	Similar stain is produced.		Higher readings are given.
Hexane		1000	Double-layer stain (pale brown and brown) is produced, but if the maximum end point of the stained layer is discernable, the accuracy of readings is not affected.

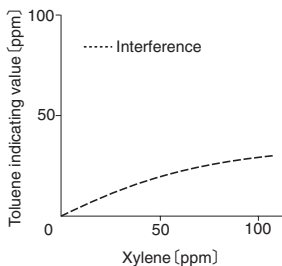


FIG.1 Influence of Xylene

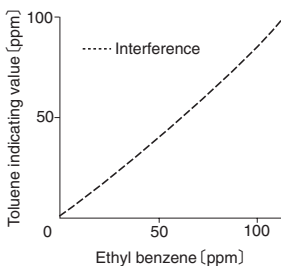


FIG.2 Influence of Ethyl benzene

TEMPERATURE CORRECTION TABLE

Tube Readings (ppm)	Corrected Concentration (ppm)		
	0 °C (32 °F)	5 °C (41 °F)	10-40 °C (50-104 °F)
100	150	125	100
80	120	100	80
60	85	75	60
40	55	45	40
30	40	35	30
20	28	23	20
10	13	10	10
5	6	5	5
2	2	2	2