

- ★ READ CAREFULLY THIS INSTRUCTION MANUAL AND THE INSTRUCTIONS OF THE ASPIRATING PUMP PRIOR TO USING THIS PRODUCT.
- ★ DO NOT DISCARD THIS INSTRUCTION MANUAL UNTIL ALL THE TUBES IN THIS BOX ARE USED UP.

### 1. PERFORMANCE:

Measuring Range	10 - 500 ppm
and Sampling Time:	1.5 minutes (1 pump stroke)
Colour Change:	White → Orange
Detectable Limit:	1 ppm
Operating temperature:	0 - 40 °C (32-104°F) (No corrections are necessary.)
Aspirating Pump:	Model AP-20, AP-20S, AP-1 or AP-1S

### ▲ CAUTION

1. BOTH DETECTOR TUBES AND PRETREAT TUBES CONTAIN REAGENTS.
2. DO NOT DIRECTLY TOUCH THESE REAGENTS ONCE TUBES ARE BROKEN.
3. KEEP THE TUBES OUT OF THE REACH OF CHILDREN.

#### NOTICE

1. USE ONLY WITH PUMP MODELS AP-20, AP-20S, AP-1 OR AP-1S. OTHERWISE, CONSIDERABLE ERROR IN INDICATION MAY OCCUR.
2. DO NOT USE FLOW CONTROL ORIFICE WITH THIS TUBE. (FOR MORE DETAIL, REFER TO THE INSTRUCTIONS OF THE ASPIRATING PUMP.)
3. BEFORE TESTING, CHECK THE ASPIRATING PUMP FOR LEAKS (REF. ITEM 8). ANY PUMPS SHOWING SIGNS OF LEAKAGE SHOULD BE CORRECTED BEFORE USE.
4. DO NOT USE THIS TUBE OUTSIDE THE STATED OPERATING TEMPERATURE RANGE.
5. STORE TUBES IN A DARK AND REFRIGERATED PLACE NOT TO EXCEED 10 °C (50°F), AND USE BEFORE EXPIRATION DATE PRINTED ON TOP OF THE BOX.
6. PRIOR TO USE, CAREFULLY READ ITEM 9 "USER RESPONSIBILITY".

### 2. SAMPLING AND MEASUREMENT:

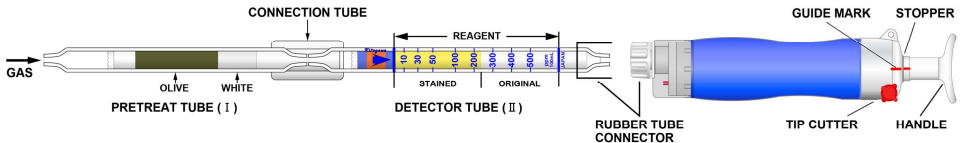


Fig.1

- ① Break both ends of detector tube and pretreat tube, and connect each end of the detector tube and pretreat tube with rubber tube connector as shown in Fig.1.

**▲ CAUTION SAFETY GLASSES AND GLOVES SHOULD BE WORN TO PREVENT INJURY FROM SPLINTERING GLASS.**

- ② Insert the detector tube into aspirating pump securely as shown in Fig.1 (Arrow mark shall point to the pump)
- ③ Align the guide marks on the shaft and stopper of the aspirating pump.
- ④ Pull the pump handle at full stroke until it locks and wait for 1.5 minutes or until the completion of sampling is confirmed with the flow indicator of the pump (See descriptions about the flow indicator in the instructions of the pump).

**NOTE:** If using Model AP-400, pull pump handle to full stroke and turn the handle by 1/4 (90°), then wait for 1.5 minutes.

- ⑤ On completion of sampling, read the scale at the maximum point of the stained layer.

**SPECIAL NOTE:** I. The scale is calibrated at 20 °C (68°F) and 1013hPa. Readings obtained in other circumstances should be corrected (REF. ITEM 3).

II. When the maximum point of the stained layer is unclear or slantedly, read the scale in the middle between the longest and shortest points.

### 3. CORRECTION FOR AMBIENT CONDITIONS:

- ① Temperature; Correct the tube reading by following temperature correction table.

Tube Readings (ppm)	Temperature Correction Table				
	0 °C (32°F)	10 °C (50°F)	20 °C (68°F)	30 °C (86°F)	40 °C (104°F)
500	-	690	500	420	350
400	-	550	400	330	280
300	-	400	300	240	200
200	380	270	200	170	130
100	180	130	100	80	60
50	90	70	50	40	30
30	60	40	30	20	15
10	20	14	10	7	5

- ② Humidity; No corrections are necessary.

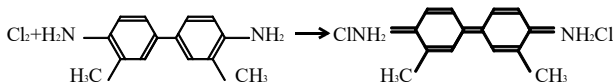
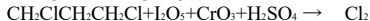
- ③ Atmospheric Pressure ;

$$\text{True concentration} = \frac{\text{Temperature corrected concentration} \times 1013}{\text{Atmospheric pressure (in hPa)}}$$

### 4. INTERFERENCE:

Alcohols, Aromatic hydrocarbons, Esters or Paraffin hydrocarbons do not affect the reading value. Halogenated hydrocarbons or Halogens produce a similar stain and will give higher readings.

### 5. CHEMICAL REACTION IN THE DET



### 6. DISPOSAL OF TUBE:

**USED TUBES SHOULD BE DISCARDED OF CAREFULLY ACCORDING TO ANY RELEVANT REGULATIONS.**

### 7. HAZARDOUS AND DANGEROUS PROPERTIES OF 1,3-DICHLOROPROPANE:

TLV-TWA ◆ : -

Explosive range in air : -

◆ Threshold Limit Value established by American Conference of Governmental Industrial Hygienists 2023.

### 8. INSPECTION OF ASPIRATING PUMP:

Checking for leaks;

- ① Insert sealed, unbroken detector tube into the pump.
- ② Align the guide marks on the shaft and stopper of the pump.
- ③ Pull the handle to full stroke and wait for 3 minutes. (If using Model AP-400, turn the handle by 1/4 (90°) to lock it.)
- ④ Unlock the handle and allow it to return slowly into the pump by holding the cylinder and handle securely.

**CAUTION HANDLE WILL TEND TO SNAP BACK INTO THE PUMP QUICKLY.**

- ⑤ If the handle returns completely to the original position, the performance is satisfactory. Otherwise, refer to maintenance procedure in the pump instructions to correct the fault.

### 9. USER RESPONSIBILITY:

It is the sole responsibility of the user of this equipment to ensure that the equipment is operated, maintained, and repaired in strict accordance with these instructions and the instructions provided with each Model AP-20, AP-20S, AP-1 or AP-1S aspirating pump, and that detector tubes are not used which are either beyond their expiration date or have a colour change different to that stated in the Performance specifications.

The Manufacturer and Manufacturer's Distributor shall not be otherwise liable for any incorrect measurement or any damages, whether damages result from negligence or otherwise.