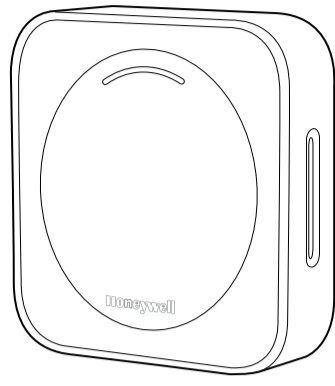


100mm

90mm

USER MANUAL



TRANSMISSION RISK AIR MONITOR

Honeywell

For more information

EURO-GAS
Transmission Risk Air Monitor
Churston House, Bascombe Road
Churston Ferrers, Devon, TQ5 0J1
United Kingdom
Tel: +44 (0)1803 844414
Fax: +44 (0)1803 844224
Email: sales@euro-gasman.com
www.euro-gasman.com



USER MANUAL FOR THE HONEYWELL TRANSMISSION RISK AIR MONITOR

PACKING LIST

Standard package includes
Honeywell Transmission Risk Air Monitor (HTRAM) device X1
User Manual X1 USB cable X1

ADDITIONAL ACCESSORIES AVAILABLE

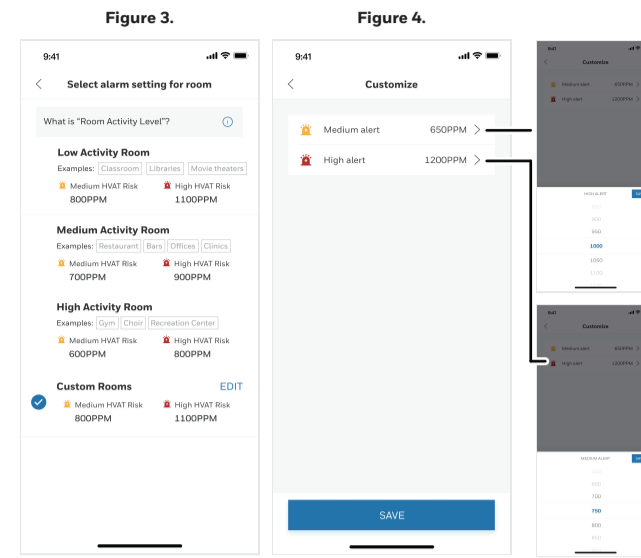
• AC adapter: HTRAM-AD-USC (USC version), or HTRAM-AD-EU (EU version) or HTRAM-AD-UK (UK version)
• Wall mount kit (separate instructions provided in kit)

OPERATION

- HTRAM is a desktop or wall-mounted device. We recommend to keep it plugged-in so it's powered by the external USB charger. There is a rechargeable battery inside that will supply power for up to 10 hours, but we recommend keeping the device plugged-in to conserve battery life.
- Device On/Off: When the device is OFF status, push and hold button for 3 seconds to turn it on. The device will show information on the screen. After the initial process (approximately 1 minute), the device enters normal status and displays readings. When the device is in ON status, push and hold top button for 3 seconds to turn it OFF.

- On the App, click the +Add New icon to add an air monitor device. (see Figures 1-2)
- Confirm the device is ready for pairing: See the icon blinking. Ensure the device's Bluetooth icon is blinking on the screen. (see Figure 2)
- If two or more devices' Bluetooth are activated, you can use the serial number to identify which device is to be paired. The serial number can be found on the back side of the device.
- Click the **Connect** icon to pair with the device.
- The app will pop up a window and request the user to input the **PIN CODE** shown on the device's screen.
- Input the 6-digit **PIN CODE**. Then, click **Connect**.
- When the Bluetooth icon on the device's screen stops blinking, pairing is complete.

Monitors should be placed in the center of activity areas and should be close to breathing height (approximately 1.5 m, depending on the height or age of the room's occupants), out of direct sunlight, and not directly located near induction units, floor fans, or heaters.
In an organizational setting, e.g. schools, restaurants, we recommend physically protecting the device by placing a lock on the device enclosure and enabling only authenticated access to the secure devices. Ensure that only authorized personnel have the required keys to physically access the devices.

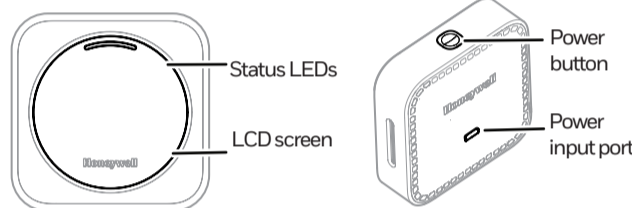


and reliable as of this writing. However, specifications may change without notice, and Honeywell assumes no responsibility for its use.
• The HTRAM does not detect for levels of CO2 that would make for an unsafe or unsuitable breathing environment.

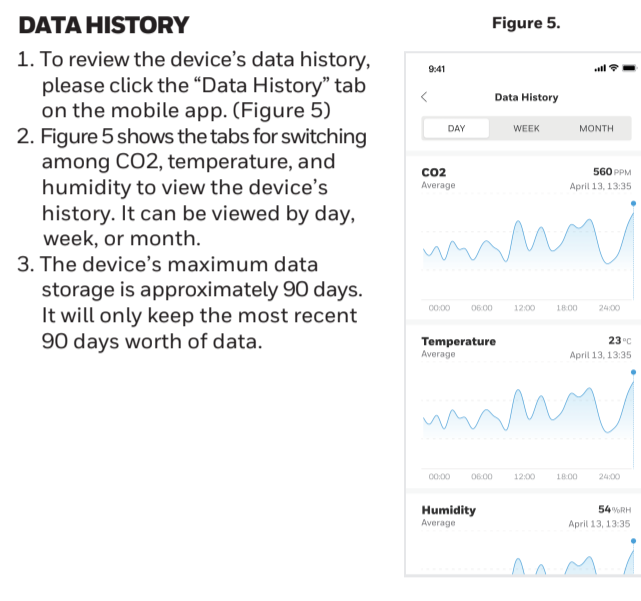
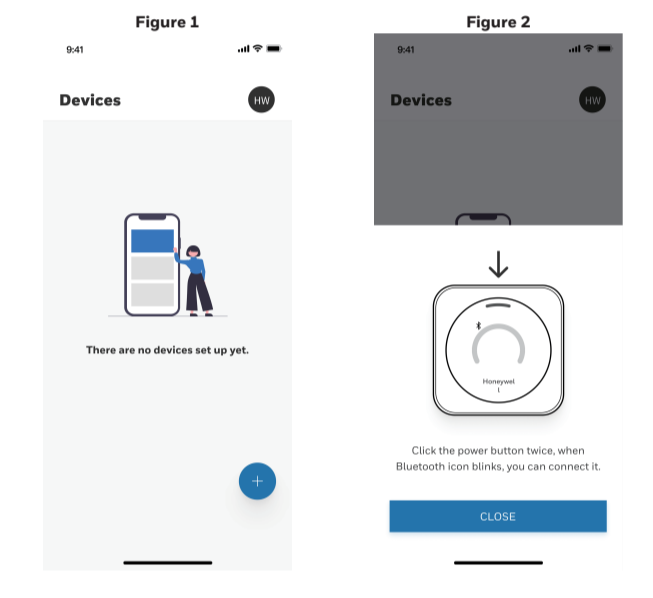
WARRANTY

- Under normal use and maintenance that is consistent with Honeywell manuals and instructions, Honeywell warrants that, for a period of one (1) year from the date of purchase, all components of this product, except software and software components, shall be free from faulty workmanship and defective materials. The software and software components, including any documentation designated by Honeywell for use with such software or software components, are provided "AS IS."
- These warranties do not apply if the claimed defect or nonconformity is due to accident, misuse, neglect, or improper shipping or handling, installation, or testing; or any failure of electrical power, air conditioning, or humidity control. This warranty is valid only if the product has not been tampered with or serviced by any party not authorized by Honeywell.
- If during the one-year warranty, the customer notifies Honeywell in writing of any alleged defect within 30 days of discovery, and

USER INTERFACE



SYMBOL	FUNCTION
	Bluetooth™ icon
	Battery capacity level
	USB power input, icon will show on screen
	HVAT* risk level: low, medium, high
	CO2 concentration reading
	Temperature reading, °C or °F
	Humidity reading
	For the first use/power on, the device will initially show "--" for approximately 1 minute

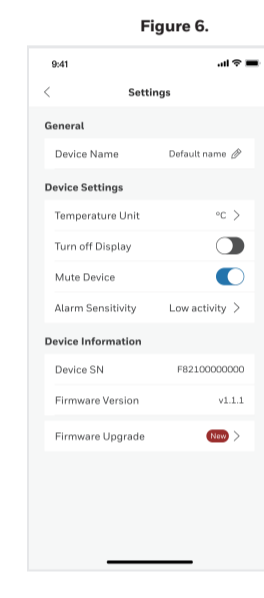


DATA HISTORY

- To review the device's data history, please click the "Data History" tab on the mobile app. (Figure 5)
- Figure 5 shows the tabs for switching among CO2, temperature, and humidity to view the device's history. It can be viewed by day, week, or month.
- The device's maximum data storage is approximately 90 days. It will only keep the most recent 90 days worth of data.

DEVICE DEFAULT SETTINGS

- Temperature unit: Select your regional temperature measurement unit on your mobile phone app and it will be displayed on the device screen as °C or °F.
- Alarm sound: Users may enable or disable the device's buzzer function. When the device's alarm sound is enabled, the buzzer will beep at medium or high alarm. When the alarm is sound disabled, the buzzer will not beep when medium or high alarm is triggered.
- Turn off display: users can turn off display on the mobile app. When display is off, users can wake up the device by pushing the top button. Then the display will auto off in 2 minutes.



have a normal life inherently shorter than the foregoing warranty period.
• Customers wanting additional warranty beyond the standard one-year warranty offered by Honeywell have the option to purchase a 2-year extended warranty when purchasing the product. Any such extended warranty shall only extend the timeframe of the warranty terms above from three years from the date of purchase, and shall not provide any additional warranty or guarantee, express or implied.

DISPOSAL

This product contains a lithium-ion battery and aluminum alloy materials. Upon receipt of the product, the customer is responsible for proper use, transport, storage and disposal of the product based on the battery and material type, including but not limited to applicable governmental requirements for proper disposal

CAUTION

Risk of explosion if battery is replaced by an incorrect type. Dispose of used batteries according to the instructions.



*HVAT Risk indicates the potential risk level of the room, with Honeywell algorithms using CO2 levels and user settings that account for human activity levels in an indoor area.

QUICK START GUIDE

- Step 1. Make sure you have everything, then charge the device.**
- Make sure these components were in the box. If any are missing, please contact the company from which you purchased the device as soon as possible:



- Connect the microUSB end to the device, and the USB connector to a power adapter or computer. Keep plugged-in until fully charged.
- Make sure the working environment is supported by Bluetooth™ and wireless with Internet access, and a user-supplied smartphone using Apple® iOS® or Android™.

- Step 2. Power up the device, download the app and complete the setup:**
- Remove the protective film from the monitor display.
 - Turn on the Transmission Risk Air Monitor by pressing and holding the "Start" button on the top for five seconds.

DEVICE INDICATION AND RECOMMENDED ACTIONS

	GREEN	YELLOW	RED
Conditions	Likely low airborne transmission risk	Likely medium airborne transmission risk	Likely high airborne transmission risk
Recommended Action	-	- Open windows - Turn on HVAC fan - Additional actions as needed	- Ventilate room immediately - Reduce activities - Move out of room until light changes to green - Additional actions as needed
Alarm	-	One beep	Two beeps

SCENARIO SELECTION

- The device has three pre-programmed scenario settings based on low/medium/high activity levels.
 - Low activity:** Reading, quietly talking, 6-foot social distancing, activity duration less than 30 minutes

- Medium activity:** Eating, talking loudly, 6-foot social distancing, activity duration less than 45 minutes
- High activity:** Running, jumping, exercising, limited social distancing, higher exhalation rate, activity duration over 45 minutes
- The default setting is the low activity setting with the alarm threshold of 800 ppm for medium and 1100 ppm for high.
- Please refer to the table below for details and to check the alarm threshold settings for each activity-based setting.

	Low Activity	Medium Activity	High Activity
Low (no Alarm) (CO2-ppm)	<800	<700	<600
Medium Alarm (CO2-ppm)	800	700	600
High Alarm (CO2-ppm)	1100	1000	800

- Click +Add to create user-defined scenario. Refer to the below customized scenario example (Figure 4). Note: User-generated settings may not detect CO2 as accurately.

HTRAM SPECIFICATIONS

CHARACTERISTIC	PARAMETER
Dimensions (H x W x D)	80 mm x 80 mm x 22 mm (3.1 in x 3.1 in x 0.87 in)
Weight	140g
Housing materials	Aluminum alloy
Display	TFT
Input voltage	5V
Input current	1A
Battery	Lithium-ion rechargeable battery 10-hour battery time
Battery capacity	2,600 mAh
Operating temperature and humidity	0°C to 40°C, 0% RH to 90% RH
USB port	Micro USB

- * The Honeywell Transmission Risk Air Monitor (HTRAM) analyzes specific air quality conditions and alerts the user when conditions are present that may increase risk of potential exposure to airborne viral**

SIMPLIFIED EU DECLARATION OF CONFORMITY

Hereby, Honeywell Analytics Inc. declare that the radio equipment type HTRAM-V1-W is in compliance with Directive 2014/53/EU. The full text of the EU declaration of conformity is available on request.

RECHARGEABLE LI-ION BATTERY

Nominal Voltage: 3.6V
Rated Capacity: 2480 mAh/8.93Wh
Typical Capacity: 2600 mAh/9.36Wh
Limited Charging Voltage: 4.2V
Manufacturer: SCUDD (Fujian) Electronics Co., Ltd.
Red Wire: (+) Black wire: (-)
Made in China

WARNING: TO PREVENT INJURY, DO NOT DISASSEMBLE, PUNCTURE, CRUSH, HEAT, OR BURN.
Use the authorized charger only. Never disassemble by yourself. Never short-circuit the battery. Dispose of the battery properly. Exposing the battery to an open flame could cause an explosion.

- Use a smartphone to download the Honeywell air monitor app (App name: Transmission Risk Air Monitor). You can download directly from the Apple™ or Google™ stores, or by scanning the appropriate QR code shown below if your phone has a scanning app or embedded capability.
- Launch the app. Then, complete the connection and setup by following the Bluetooth pairing process in this document.



HOW TO PAIR YOUR DEVICE

- Open the App, and enable mobile Bluetooth® in the device's Settings/Bluetooth.
- Double click on the device button. The Bluetooth icon on the device's screen will appear and blink, waiting for pairing. Note: The button must be pushed to enable the device's Bluetooth. The Bluetooth icon will blink for one minute, and Bluetooth will be shut down if no connection is found. Double click the button again to enable the device's Bluetooth option.

- transmission. It does not prevent or reduce virus transmission nor mitigate viruses that may be present, nor does it detect or warn against the presence of any virus, including but not limited to COVID-19. The HTRAM does not repel or destroy any microorganism, viruses, bacteria, or germs.
- It is buyer's sole responsibility (1) to determine the suitability of the HTRAM for use in its application, (2) to operate the HTRAM in accordance with the User Manual and any other instructions provided by Honeywell, (3) to determine, based on buyer's experience, expertise, and other available tools, the suitability of any product or service it may offer or recommend to the end user.
- Buyer is responsible for determining whether the product is appropriate for use under certain statutory guidelines and is likewise responsible for determining whether the HTRAM qualifies for any government reimbursement programs.
- Any recommendations or assistance provided by Honeywell regarding the use or operation of the HTRAM – through our literature, the Honeywell web site, or otherwise – shall not be construed as representations or warranties of any kind, express or implied, and such information is accepted at buyer's own risk and without any obligation or liability to Honeywell.
- The information we supply in this data sheet is believed to be accurate

Strangulation HAZARD: Children have STRANGLED in cords. Keep this cord out of reach of children (more than 3 ft (1m) away). Do not use with an extension cord.

ATTENTION

- To better reflect the air environment, Honeywell recommends continuously monitoring indoor air using the HTRAM. It is recommended that the device runs for 24 hours for the first time until it is fully charged and initialized.
- For safety and battery performance, the device can only charge the battery indoors in a 0°C to 40°C [32°F to 104°F] temperature range. The charging time from empty to full battery is approximately 6 hours. During charging, the device surface will have a slight temperature rise.

INSTRUCTIONS IN OTHER LANGUAGES

- Please scan the QR code below to download the User Manual in the following languages.



Fold line

Fold line

Fold line

Fold line

Front

Back