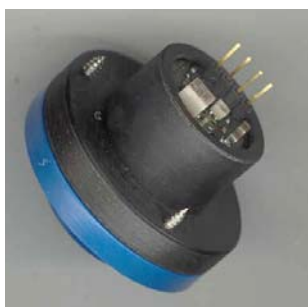


# INSTALLATION KIT FOR 4 SERIES GAS SENSORS

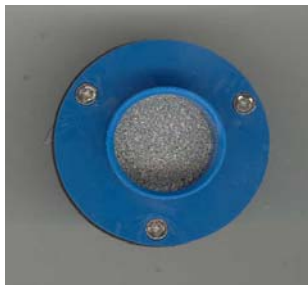
- Installation Kit suitable for standard 4 series sized gas sensors with suitable fitting circuitry / transmitters.
- Allows for easy assembly of gas sensors with transmitters into wall mounting boxes and panels.
- Kit includes fixing ring, sensor holder, sinter metal sensor protection disc, small o-ring (18x1,0) and three screws.
- Accompanying test gas cap available to fit installation kit, which is suitable for flow of test and calibration gas.
- Part no. 2112B1002



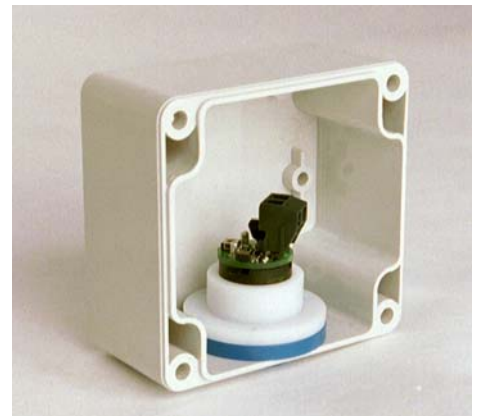
**Figure 2. EXAMPLE:** ECO-Sure CO sensor and detachable 4-20mA transmitter (part no. 2112B1005) fitted into installation kit (part no. 2112B1002).



**Figure 3. EXAMPLE:** CO SS 1-4.8V transmitter including integrated sensor (part no. 2112B013440) fitted into installation kit (part no. 2112B1002).



**Figure 4. Mounting end of installation kit showing assembled installation fixing ring, sinter disc and screws.**



**Figure 1. EXAMPLE:** ECO-Sure CO sensor and 4-20mA transmitter (part no. 2112B1005) with installation kit (part no. 2112B1002) and, as an example, built into Bopla wall mounting housing (please note: (i) Bopla plastic housing is shown as an example only and is not available from Euro-Gas. (ii) Sensor holder is now black).



**Figure 5. EXAMPLE:** ECO-Sure CO sensor and 4-20mA transmitter (part no. 2112B1005) assembled with installation kit (part no. 2112B1002) and plugged into test gas cap (part no. 2112B1010). This unit is ready for installation into housing or a panel (please note: sensor holder is now black).



# INSTALLATION KIT FOR 4 SERIES GAS SENSORS

## COMPONENTS AVAILABLE



**Figure 6. Installation Kit Components (left to right). Part no. 2112B1002**  
Screws, small o-ring, sinter metal sensor protection disc, sensor fixing ring and sensor holder.



**Figure 7. NO2 Installation Kit Components (left to right) for NO2 sensors. Part no. 2112B1012**  
Screws, small o-ring, plastic sensor protection disc, sensor fixing ring and sensor holder.



**Figure 8. Test Gas Cap. Part no. 2112B1010**



**Figure 9. Test Gas Cap and installation ring option. Part no. 2112B1011**



# INSTALLATION KIT FOR 4 SERIES GAS SENSORS

## DIMENSIONS (all dimensions in mm)

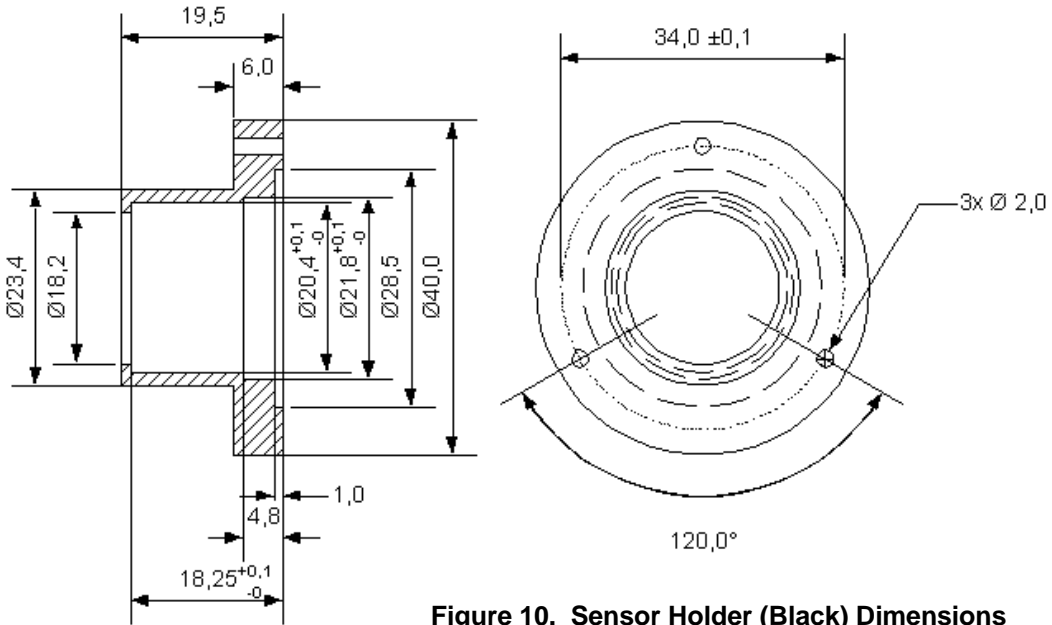


Figure 10. Sensor Holder (Black) Dimensions

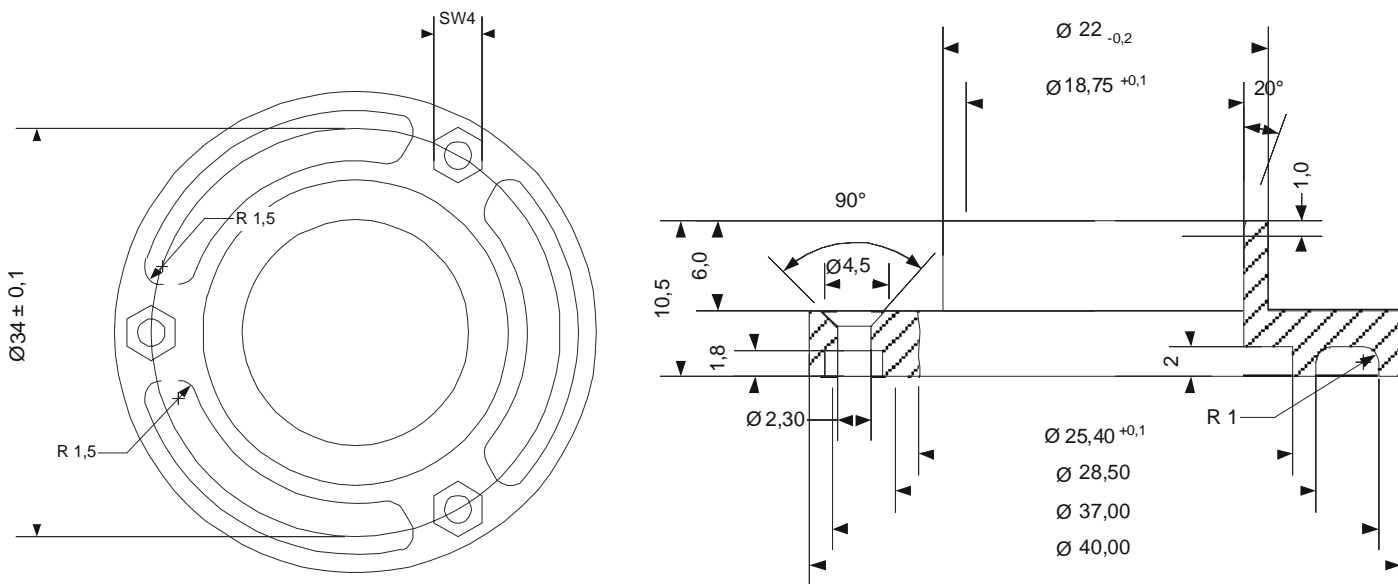


Figure 11. Sensor Fixing Ring (Blue) Dimensions



EURO-GAS MANAGEMENT SERVICES LTD, CHURSTON HOUSE,  
BASCOMBE ROAD, CHURSTON FERRERS, DEVON, TQ5 0JJ, UK

☎: +44 (0)1803 844414 Fax: +44 (0)1803 844224

euro-gas@btconnect.com www.euro-gasman.com

**EURO-GAS**  
MANAGEMENT SERVICES LTD

# INSTALLATION KIT FOR 4 SERIES GAS SENSORS

DIMENSIONS (all dimensions in mm)

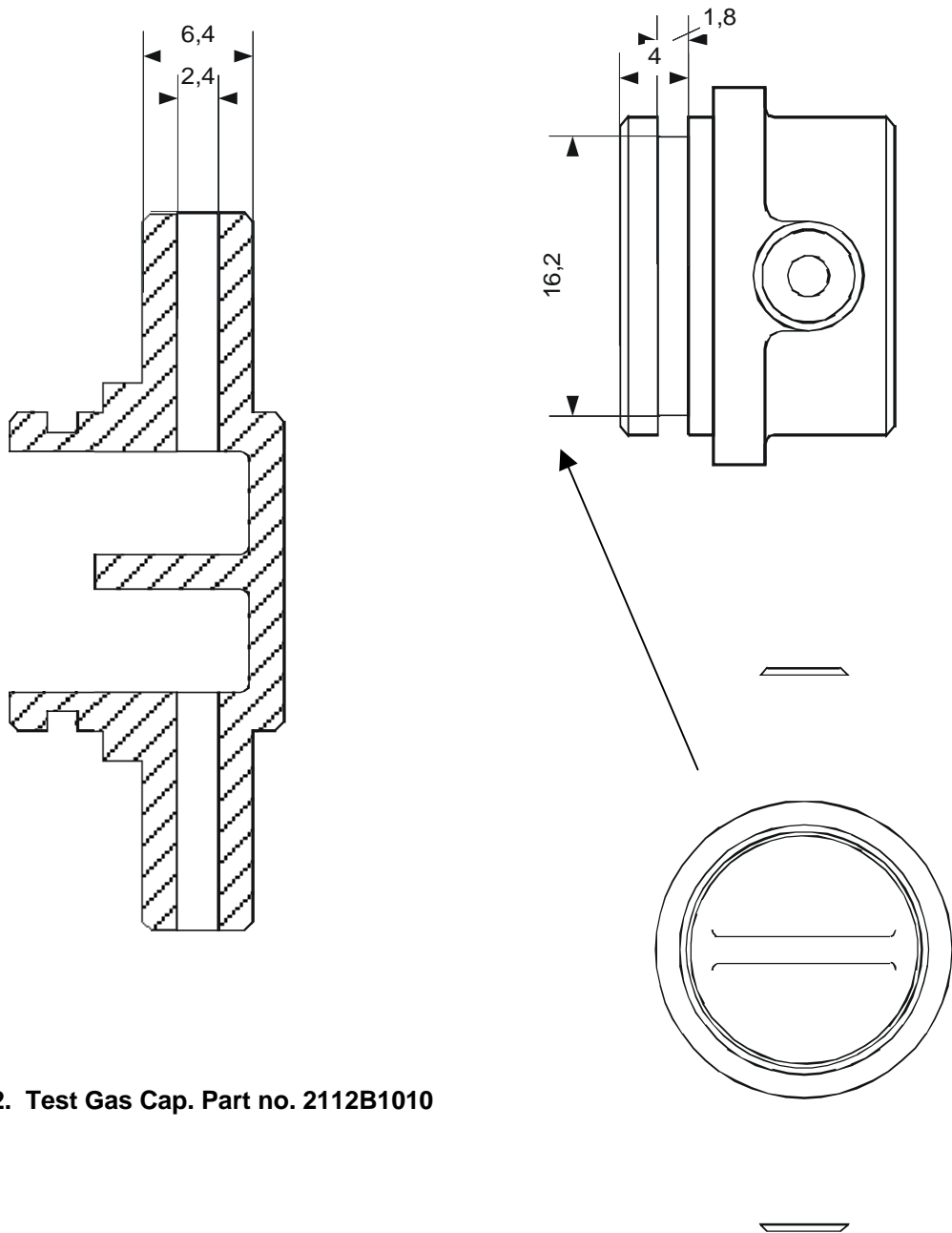


Figure 12. Test Gas Cap. Part no. 2112B1010

